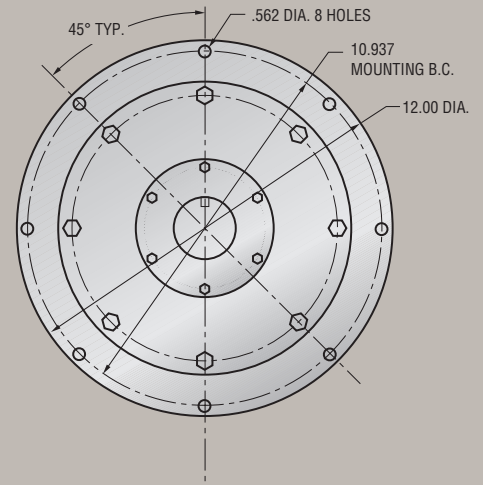
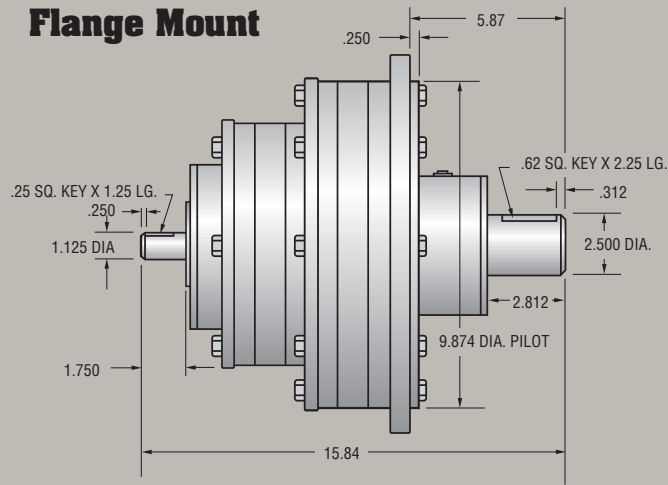


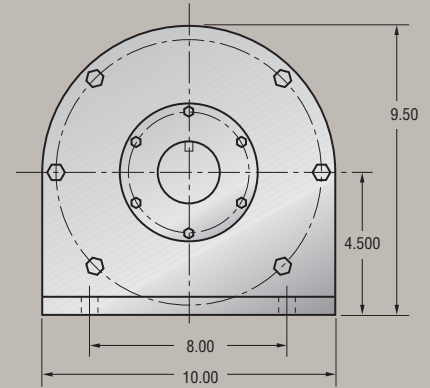
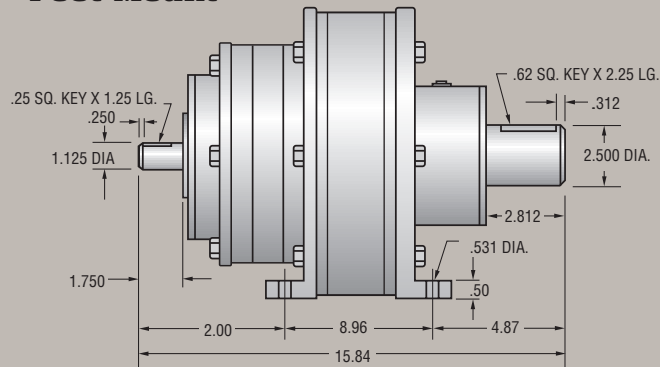
Model 75-75S

Double Reduction Planetary Gear Reducer

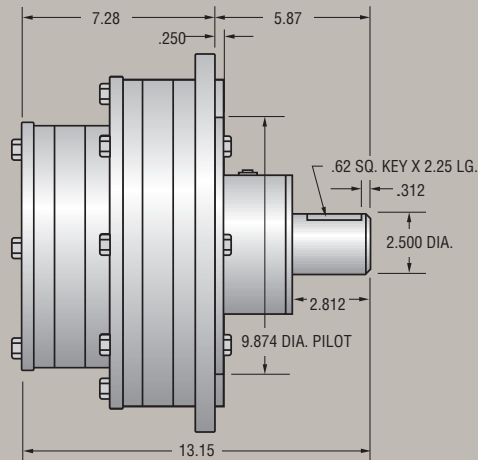
Flange Mount



Foot Mount



Flange or Foot Mount w/SAE or NEMA Input



NEMA Electric Motor Direct Mount

"C" face direct couple of motor to speed reducer. No need for coupling or special motor mounts.

SAE Hydraulic Motor Direct Mount

2 bolt or 4 bolt direct couple of hydraulic motor to speed reducer. No need for coupling or special motor mounts.



Byrne
**Gear Corporation
of America**

- Planetary speed reducers
- High-speed increasers
- Custom design geared products

"The Problem Solver"

Model 75-75S

Double Reduction Planetary Gear Reducer

Planetary Assembly	Ratios	OUTPUT HORSE POWER RATINGS (Adjusted for Thermal Efficiencies)						
		INPUT R.P.M.						
		100	580	720	870	1170	1430	1750
EE	9.00	2.13	7.29	8.48	9.68	11.91	13.71	15.79
EA	10.50	2.69	9.20	10.70	12.22	15.04	17.30	19.93
EB	12.00	4.61	15.76	18.34	20.94	25.76	29.65	34.15
AA	12.25	2.41	8.26	9.61	10.97	13.50	15.53	17.89
CE	12.99	1.65	5.64	6.56	7.48	9.21	10.60	12.21
AB	14.00	4.13	14.15	16.46	18.80	23.13	26.62	30.66
CA	15.17	2.08	7.11	8.27	9.45	11.62	13.38	15.41
BB	16.00	3.74	12.89	15.00	17.12	21.06	24.24	27.92
CB	17.33	3.45	12.19	14.18	16.19	19.92	22.92	26.40
DE	18.00	1.31	4.49	5.22	5.96	7.33	8.44	9.72
CC	18.78	2.17	8.55	9.95	11.36	13.97	16.08	18.52
DA	21.00	1.65	5.66	6.59	7.52	9.26	10.65	12.27
DB	24.00	2.50	9.70	11.29	12.89	15.86	18.25	21.02
DC	26.00	1.57	6.81	7.92	9.04	11.13	12.81	14.75
DD	36.00	1.52	5.21	6.06	6.92	8.51	9.80	11.28

Ratings based upon uniform steady and moderate shock loading. See load factor chart for details.

OUTPUT SHAFT RADIAL (overhung) LOAD CAPACITIES (at output r.p.m.)								
R.P.M.	10	20	30	50	100	200	300	500
Radial Capacity (lbs.)	8,200	6,600	5,800	5,000	4,100	4,000	3,250	2,600

OUTPUT SHAFT THRUST LOAD CAPACITIES (at output r.p.m.)								
R.P.M.	10	20	30	50	100	200	300	500
Thrust Capacity (lbs.)	12,609	10,097	9,071	7,781	6,322	5,136	4,457	3,900

OUTPUT SHAFT MAXIMUM CONTINUOUS TORQUE CAPACITY: 18,753 lb./inches
OUTPUT SHAFT INTERMITTENT TORQUE CAPACITY: 21,300 lb./inches
WEIGHT: 130 lbs.
RATING SYSTEM: All Ratings Based Upon American Gear Manufacturers' Association Standards



Byrne

"The Problem Solver"

Part of The Byrne Group

Copyright © Byrne Gear Corporation of America
 Printed in U.S.A. 697

GEAR CORPORATION OF AMERICA

301 Byrne Gear Drive
 P. O. Box 1789
 Mansfield, Ohio 44901
 Telephone: (419) 522-GEAR(4327)
 Fax: (419) 525-2386
 E-mail: byrne@byrnegroup.com
 Visit our web site at: www.byrnegroup.com